

INTO THE GLOSS

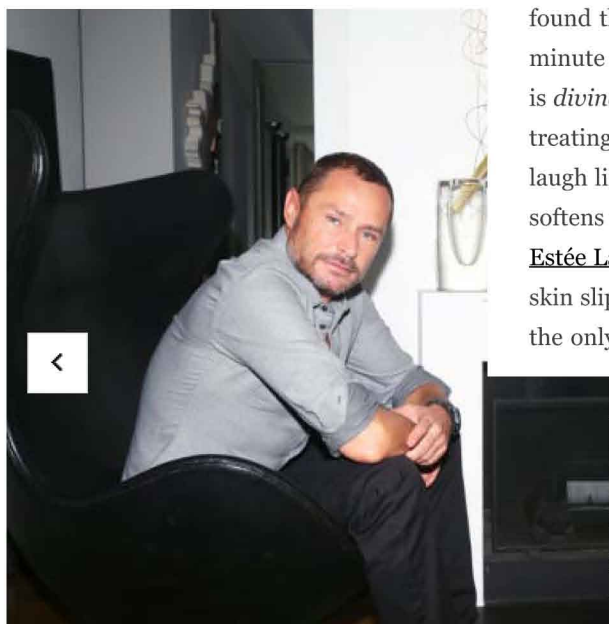


ITG GUIDES
From the Top Shelf



I don't wear makeup myself—only sometimes if I have a big pimple. I don't cover bags under my eyes or anything, I just take good care of my skin. The best way to clean your face is with Biologique Recherche Lait VIP 02 Cleansing Milk, which is basically a makeup remover. While I'm waiting for the shower to warm up, I rub it on my face and let it sit. In the shower, I use Biologique Recherche Lotion P50, and follow it with Biologique Recherche L'Eauxygénante Spray. Their products *smell* like science. I found them because when you travel first class on Air France, you get a free 30 minute treatment with Biologique Recherche. The food is excellent and the treatment is *divine*. Once a week, I exfoliate with Sisley Buff and Wash Facial Gel. I'd say I'm treating my skin for...everything and nothing. [Laughs] For getting rid of puffy eyes or laugh lines, Biologique Recherche Serum Yall O2 is *amazing*. After a few minutes, it softens the lines completely. Then, to moisturize, when my skin is very dry, I use Estée Lauder Re-Nutriv. I very rarely put oil on my own face because it makes your skin slippery, but I use it on models all of the time under their makeup because it's the only way to give the skin a nice transparency.

96



9 PRODUCTS

14 COMMENTS

Join the Discussion

SHARE THIS POST



GET THE PRODUCTS



SISLEY BUFF & WASH FACIAL GEL



ESTÉE LAUDER RENUTRIV REPLENISHING COMFORT CREME



YVES SAINT LAURENT NEW OPIUM EAU DE PARFUM SPRAY



SERGE LUTENS AMBRE SULTAN



PREJUME STYLING WAX 7



BIOLOGIQUE RECHERCHE SERUM YALL O2



BIOLOGIQUE RECHERCHE L'EAUXYGÉNANTE



BIOLOGIQUE RECHERCHE LOTION P50 W



BIOLOGIQUE RECHERCHE LAIT VIP 02

11.25.13 / THE TOP SHELF

TOM PECHEUX, M
ARTIST

"I didn't always want to be a makeup artist; I started as a pastry chef. I went to school

the GLOSSARY